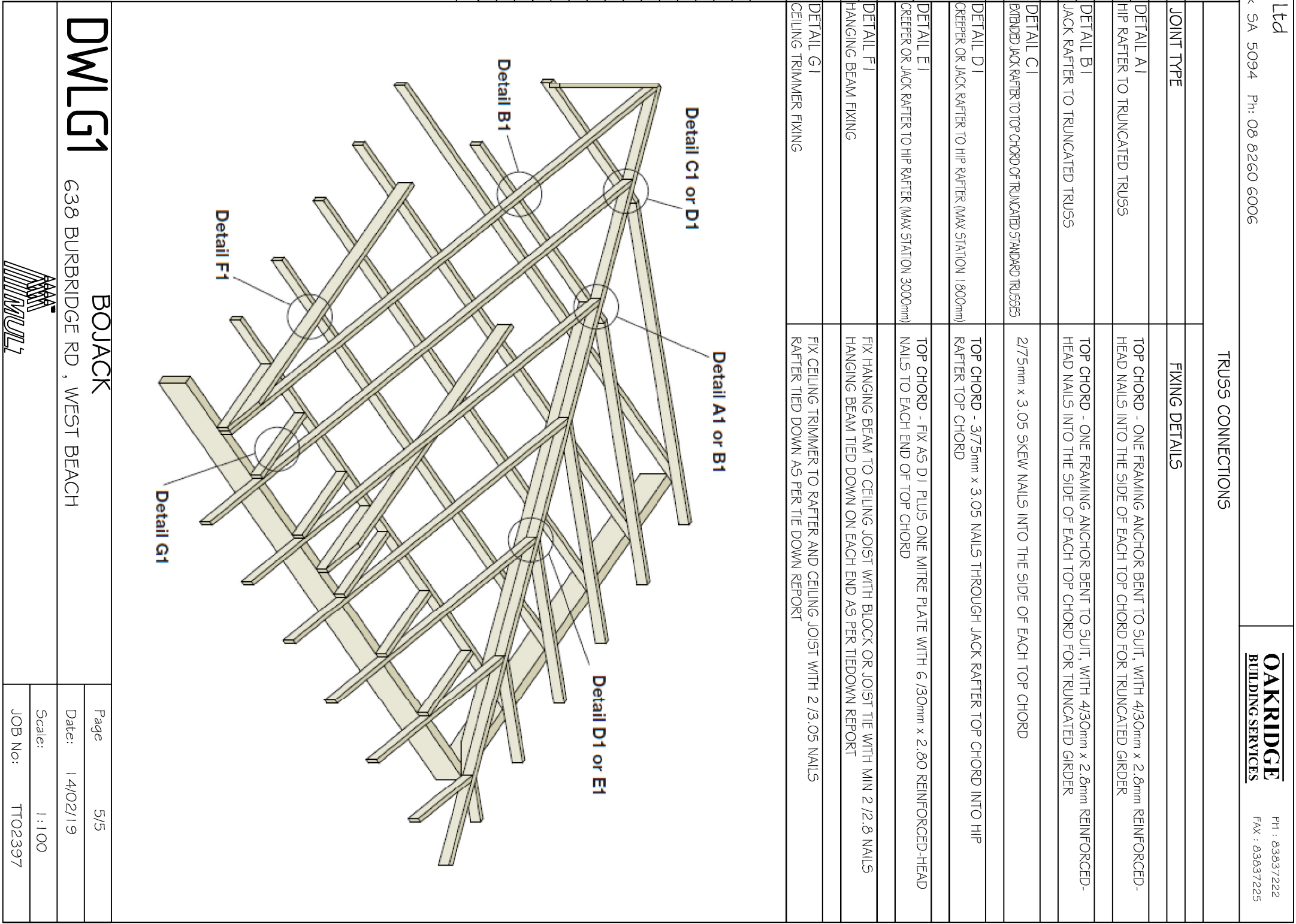
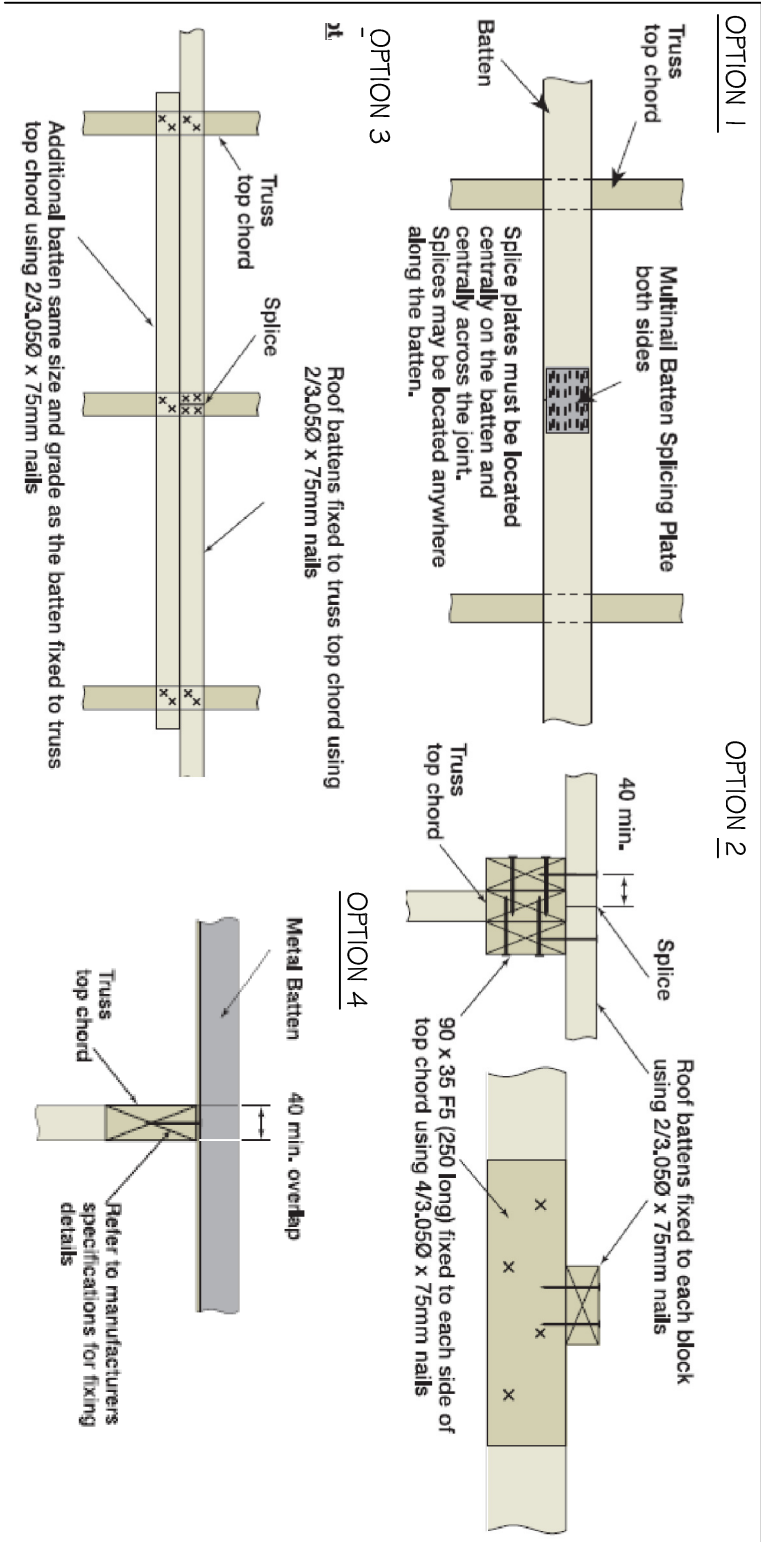


N1 - IRON ROOF 2 - STOREY

JOINT GROUP JD5		*TIEDOWNS TO LINE UP VERTICALLY*	SPECIFIC TIE-DOWN FIXINGS
JOINT		NOMINAL FIXINGS	
WALL FRAMING			
TOP & BOTTOM PLATES TO STUDS		2/75 x 3.05mm NAILS	MULTINAIL ST4 STUD TIE @ 1200mm CTS
NOGGIN5		2/75 x 3.05mm NAILS SKEWED OR THROUGH NAILED	N/A
BOTTOM PLATE TO CONCRETE SLAB		1/75mm MASONARY NAIL @ 1200mm CTS MAX.	1/12x100 SCREWBOLT WITH 50mm SQUARE WASHER or equivalent, eg. dywidag @ 1200 CTS & WITHIN 100mm OF JAMB STUDS
NAIL LAMINATED STUDS		2/75 x 3.05mm NAILS @ 600mm CTS	N/A
SIDES OF OPENINGS TO PLATE		2 / 75 x 3.05mm NAILS TO 35mm PLATE	OPENINGS 0-1800 - 1/30x0.8 G.I. STRAP WITH 6/12.8NAILS @ EACH END OPENINGS 1800-3600 - 2/30x0.8 G.I. STRAP WITH 6/12.8NAILS @ EACH END
FIXING TO SLAB/FLOOR @ EACH END OF STRUCTURAL BRACE		N / A	1/10x100 SCREWBOLT WITH 40x40x3mm PLATE WASHER OR M10 BOLT + WASHER
ROOF FRAMING			
RAFTER / TRUSS TO FRAME		2/75mm SKEW NAILS	1/30x0.8 G.I. STRAP WITH 3/2.8mm NAILS @ EACH END OR A FRAMING ANCHOR
RAFTER / TRUSS INTERNAL SUPPORT TO FRAME		2/75mm SKEW NAILS	1/30x0.8 G.I. STRAP WITH 3/2.8mm NAILS @ EACH END OR A FRAMING ANCHOR
CEILING JOISTS TO TOP PLATE		2/75mm SKEW NAILS	N/A
CEILING JOISTS TO RAFTERS		2/75mm MACHINE DRIVEN NAILS	1M10 CH BOLT AT EACH END TO EVERY COMMON RAFTER > 4.2
COLLAR TIES TO RAFTERS		3/75mm MACHINE DRIVEN NAILS < 4.2	N/A
RAFTER TO RAFTER @ RIDGE		75x8 TIE WITH 3/75x3.05 NAILS EACH END AND TO EVERY COMMON RAFTER	N/A
RAFTER TO UNDERPURLIN		2/75mm SKEW NAILS	1/30x0.8 G.I. STRAP @ 3.0m CTS TIEDOWN TO FLOOR VIA WALLS
HIP RAFTER TO UNDERPURLIN		CLEAT PLATE TO UNDERPURLIN / HIP CONNECTION	N/A
VERANDAH BEAM TO POSTS		2M10 BOLTS	N/A
ROOF BATTENS		1 No 14 x 100mm TYPE 17 SCREW	N/A
FLOOR FRAMING			
BOTTOM PLATE TO FLOOR FRAME		1/75x3.05mm MACHINE DRIVEN NAILS @ 1200 CTS MAX	N/A
UPPER FRAME TO LOWER FRAME		N/A	1M10 CUPHEAD BOLT @ 1200 CTS MAX (100mm MAX FROM TRUSS)
EACH END OF STRUCTURAL BRACE		N/A	1M10 CUPHEAD BOLT @ 1200 CTS MAX
ROOF BATTEN SPLICING CRITERIA			



DWL G1

BOJACK
638 BURBRIDGE RD , WEST BEACH

